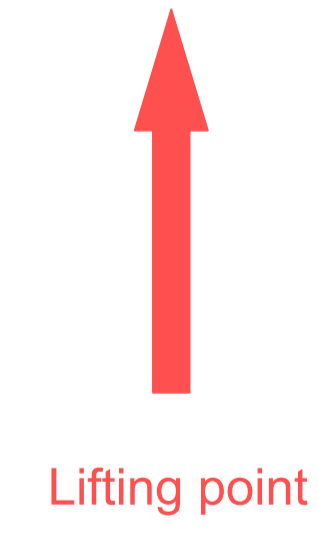


Weight of each mat max. 1.200 kg



LV TYP1

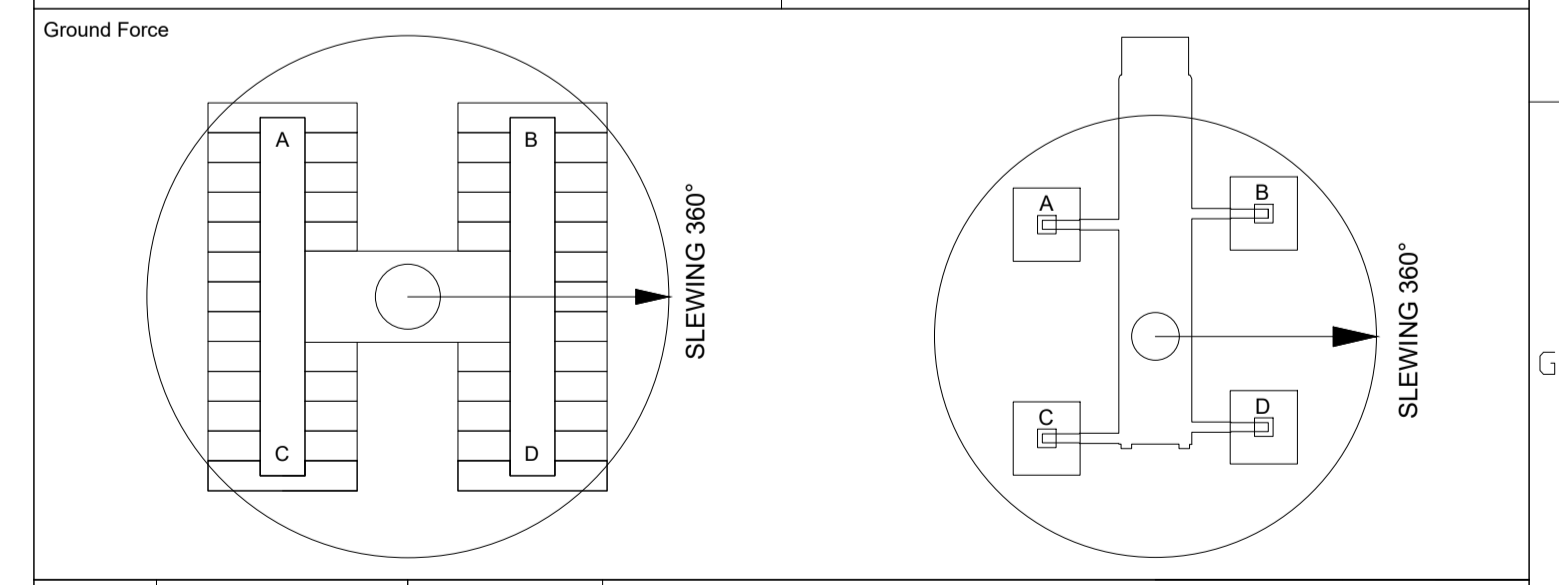
Technische Daten / Specifications

Eigenschaft / Criteria	Einheit / Unit	Mora	Wamara
Darstelltes Holz (Fahrenheit)		Mischung aus Mora und Wamara, Verteilung unbekannt	
Illustrated wood (Fahrenheit)		Mixture of Mora and Wamara, distribution unknown	
Gewicht bei 12% Holzfeuchte	[kg/m ³]	1030	1200
Weight at 12% timber moisture	[kg/m ³]	1030	1200
Monnin Härte	[N/mm ²]	8,6	18,4
Monnin strength	[N/mm ²]	8,6	18,4
Koeffizient Schrumpmaß	[%]	0,68	0,82
Shrinkage	[%]	0,68	0,82
Schrumpmaß tangential	[%]	10	8,3
Tangial shrinkage	[%]	10	8,3
Schrumpmaß radial	[%]	6,5	6,3
Radial shrinkage	[%]	6,5	6,3
Druckfestigkeit	[N/mm ²]	80	110
Crushing strength	[N/mm ²]	80	110
Biegefestigkeit	[N/mm ²]	141	202
Bending strength	[N/mm ²]	141	202
Elastizitätsmodul	[N/mm ²]	18940	32700
Elasticity	[N/mm ²]	18940	32700
Dauerhaftigkeitsklasse		III-II	I
Durability class		III-II	I
Pilzbeständigkeit		sehr beständig	sehr beständig
Resistance to fungal attack		sehr beständig	sehr beständig

04	-			
03	-			
02	-			
01	-			
00	INDICATIVE, PRELIMINARY, FOR INFORMATION ONLY			
Revision		Date	DRAWN	CHECKED

Art dieses Dokuments / Type of document
Zeichnung (D)

Status dieses Dokuments / Status of document
CONCEPT



Scale	No Scale	Status of document	CONCEPT
Size	A1	File-ID	FAHNT-SUP-LV TYP1-WOOD-200.dwg
Date	2016/04/21	Document-No.	01

Valid with FITC-03 only. As long as this document is not signed by an authorized Fahrenheit representative this DOCUMENT is uncontrolled, not binding for Fahrenheit and to be used for the purpose of simplified illustration only.

ATTENTION! For this DOCUMENT we reserve all and any rights. Without our previous written consent, this DOCUMENT must neither be reproduced nor duplicated or made available to third parties, nor may this DOCUMENT be used or exploited or utilized in a different way by the receiver or any third parties. In case of nonobservance of or noncompliance with these conditions, we shall claim damages and institute legal proceedings against any offenders.

Kunde/Client	VARIOUS	Aktivität/Activity	VARIOUS
Projekt/Project	BAGGERMATTEN 200 MM / HARD WOOD MATS 200 MM	Equipment	LV TYP1
		FAHRENHOLZ GMBH & CO. KG	
Strasse/Street	KONSUL-SMIDT-STRASSE 10	Telefon/Phone	+49 421 48 50 41 0
PLZ/Zip code	28217	Fax/Fax	+49 421 48 50 41 41
Stadt/City	BRITZEM	Email	INFO@FAHRENHOLZ-KRANDE
Land/Nation	GERMANY	Web	WWW.FAHRENHOLZ-KRANDE